




NDC3.0 and GEDSI:

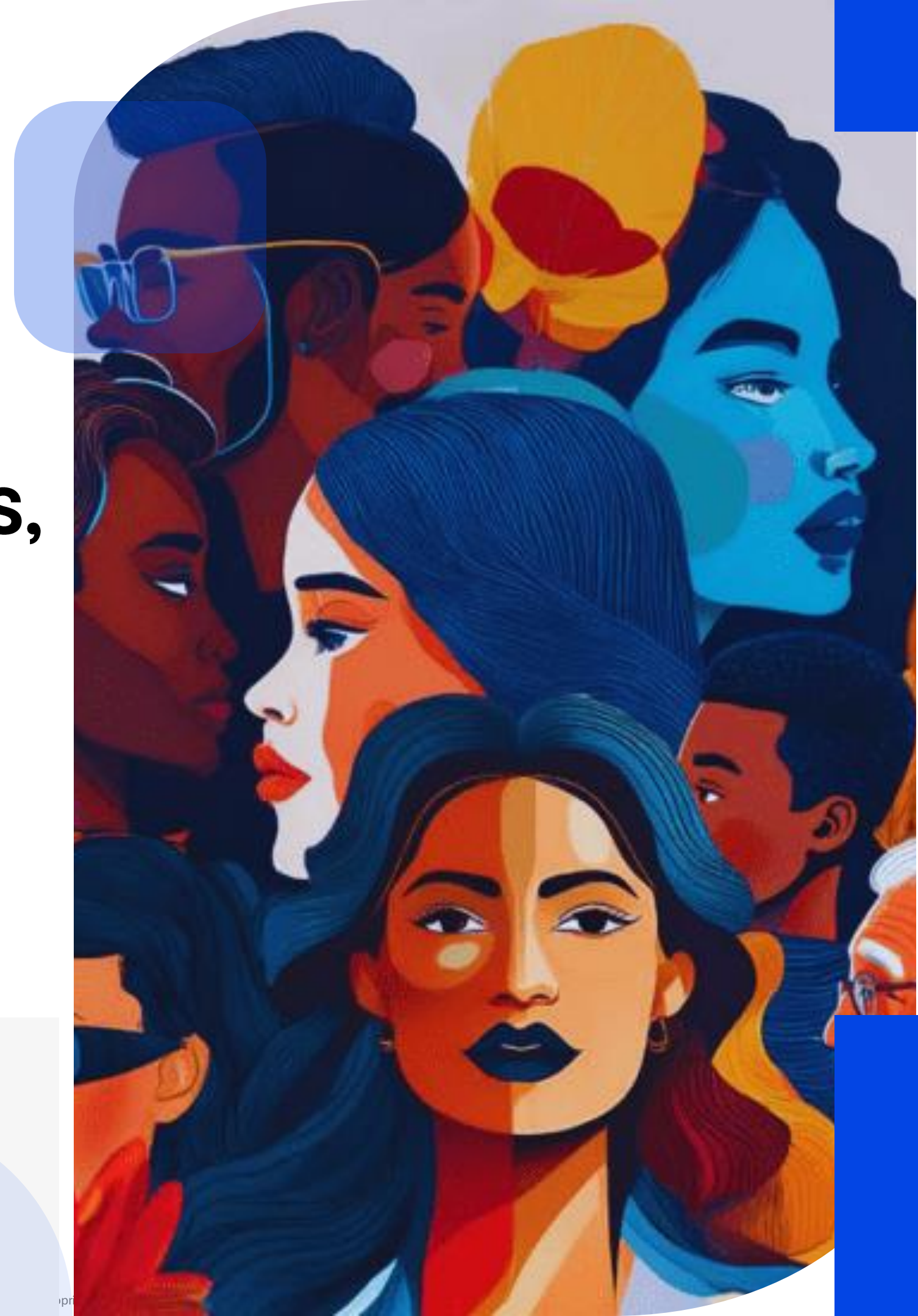
INTEGRATION OF GENDER ASPECTS, INCLUSION AND SOCIAL INTEGRATION INTO CLIMATE STRATEGIES

October 22, 2025

Baktygul Ysabekova,
UNDP, NDC and Transparency coordinator

 baktygul.ysabekova@undp.org

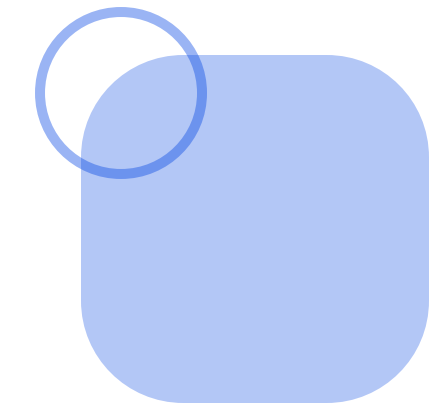
 www.undp.org/kyrgyzstan





CONTENT

- 01 Context and rationale
- 02 What is GEDSI?
- 03 Global and regional context
- 04 Kyrgyzstan: Climate and Social Profile
- 05 Integration of GEDSI into NDC3.0
- 06 Examples from Kyrgyzstan (private sector)
- 07 Further actions
Conclusion



Context and rationale

GEDSI (Gender Equality, Disability, and Social Inclusion) is a gender equality, disability, and social inclusion framework used in development, programming, and policy to ensure equitable access and outcomes for all people.

* GEDSI (Gender Equality, Disability, and Social Inclusion) is developed and promoted by a number of international organizations.

Gender Equality, Disability and Social Inclusion Self-Assessment Tool:

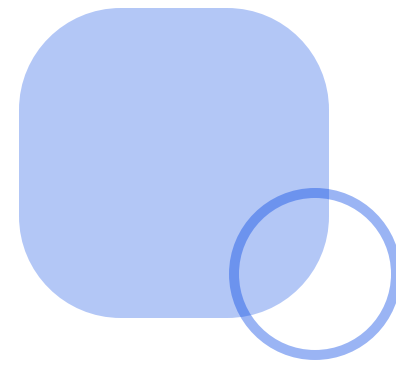
https://www.waterforwomenfund.org/en/learning-and-resources/resources/KL/Extension-Phase/Water-for-Women_2025_GEDSI-SAT_FINAL_web.pdf

Enabling GEDSI-Responsive DRR Planning & Budgeting Tips On Strategies and Approaches:

<https://wrd.unwomen.org/sites/default/files/2024-10/np-c949-05-gender-equality-disability-and-social.pdf>

Towards Gender Equality, Disability and Social Inclusion in the Water-Energy-Climate Nexus:

<https://www.sumernet.org/media/download/orig/34a70cdfc62cb52b304e9348e3acad2de0a12ab7.pdf>



01

The impact of climate change is not gender-neutral.

02

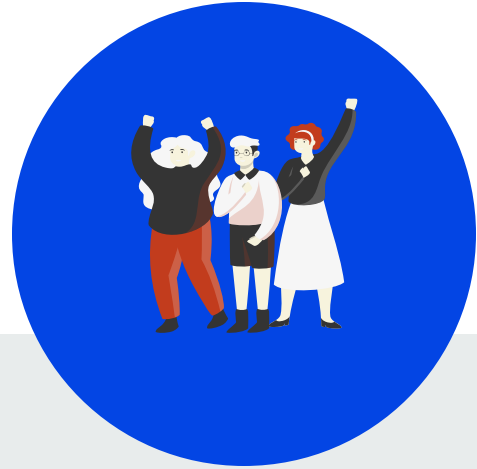
Women, people with disabilities and vulnerable groups are subjected to more risk and have less opportunities to adapt

03

Incorporating GEDSI principles makes climate policy more just, effective and sustainable

GEDSI = Gender Equality, Disability, and Social Inclusion

WHAT IS GENDER EQUALITY within the framework of GEDSI ?



Equal access to opportunities and resources

Participation in the economy, education, healthcare, and decision-making regardless of gender, disability, or social status.



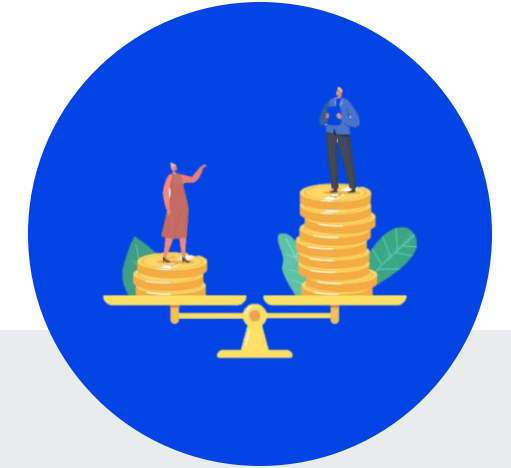
Reducing discrimination and barriers

Removing barriers for people with disabilities and ensuring their full and equal participation in society.



Inclusive planning and participation

Ensuring the participation and well-being of all members of society, including marginalized and disadvantaged groups, in programs and projects.



Intersection of inequality factors

Gender, age, ethnicity, socioeconomic status, geography and other factors that influence access to resources are taken into account.

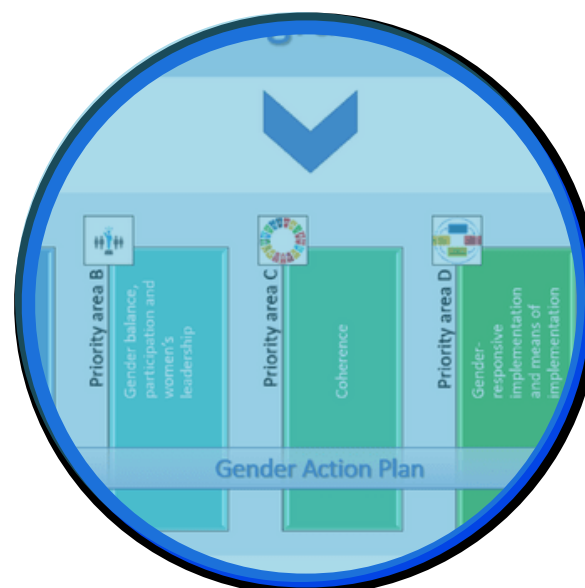
GLOBAL AND REGIONAL CONTEXT

Key points:

Helps organizations identify and address barriers faced by marginalized groups, including women, people with disabilities, and those living in rural or remote areas.

Allows us to analyze social norms, the distribution of power, and the intersection of different identities to understand the causes of unequal opportunities.

Integrating GEDSI into projects promotes fairness and inclusion, ensuring equal opportunities for participation and benefits.



Paris Agreement

Focus on gender-sensitive climate action.

Enhanced Lima Work Programme

The Gender Action Plan is a document that aims to make climate policy more gender-sensitive and equitable.

Sustainable Development Goals

SDG 5: Achieve gender equality and empower all women and girls.

SDG 13: Take urgent action to combat climate change and its impacts.

KYRGYZSTAN

Climate and social profile

Social and gender aspects are critical for effective climate policy

Mountainous, climate vulnerable country

Kyrgyzstan is prone to melting glaciers, droughts, floods, and landslides, increasing climate risks for the population and economy.

Women and youth play a key role in agriculture and community resilience.

Most families derive their income from agriculture, livestock farming, and forest ecosystems, which are directly dependent on the climate.

Approximately 65% of the population lives in the countryside, depends on natural resources

They are actively involved in food production, water resource management and climate change adaptation initiatives.

Approximately 5–7% of the population has a disability (according to the National Statistical Committee)

People with disabilities often face limited access to infrastructure, education, and climate-resilient resources.

INTEGRATION OF CLIMATE ISSUES INTO THE NATIONAL AGENDA

- **The Action Plan for 2022-2024** sets a goal of **enhancing adaptation to climate change, taking into account gender aspects.**
- The document includes measures to integrate a gender dimension into climate policy and strengthen the capacity of government agencies to incorporate gender factors in climate risk management.
- These measures are consistent with the principles of the **Paris Agreement**, promoting a gender-sensitive approach in national climate policy:
 - Long-term Action Framework for Achieving Carbon Neutrality in the Kyrgyz Republic by 2050
 - Nationally Determined Contributions (NDC2.0 and NDC3.0)
 - National Adaptation Plan (NAP)
 - National Biodiversity Strategy and Action Plan (NBSAP) – Convention of biological diversity (as a part of NDC adaptation)
- Currently, the **National Action Plan for 2025–2027** is being approved, where adaptation and inclusive approaches will be **cross-cutting elements of all priority areas.**



ОПРЕДЕЛЯЕМЫЙ
НА НАЦИОНАЛЬНОМ УРОВНЕ ВКЛАД
КЫРГЫЗСКОЙ РЕСПУБЛИКИ

ОНУВ3.0

NDC
3.0

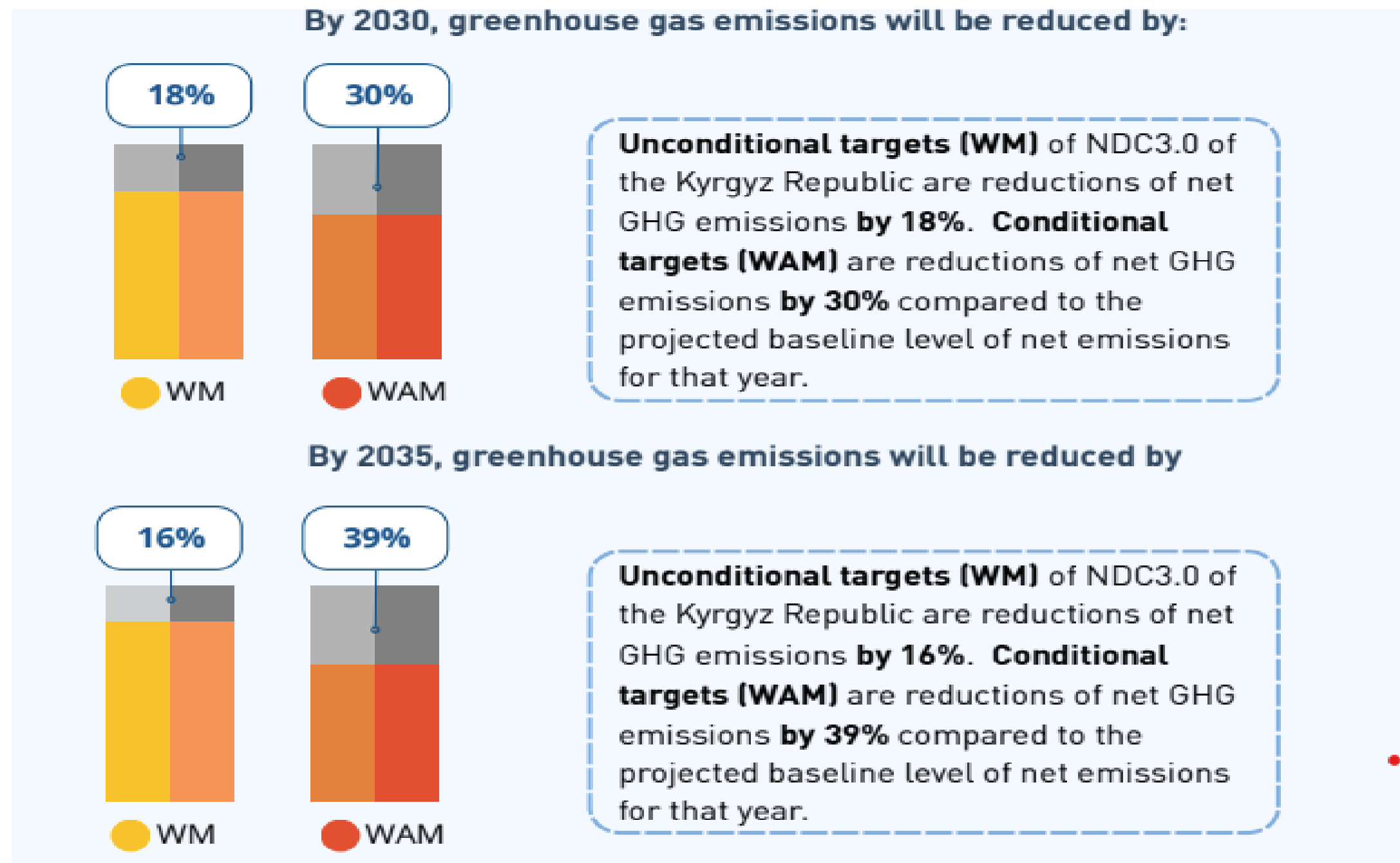
г. Бишкек, 2025 г.

NDC3.0 CONTEXT AND ITS IMPORTANCE FOR KR

- Nationally Determined Contribution (NDC3.0) is Kyrgyzstan's key document under the Paris Agreement, setting national climate goals until 2030.
- NDC3.0 strengthens Kyrgyzstan's ambitions **to reduce GHG emissions and includes new adaptation measures** to protect the population and economy. The document facilitates the attraction of **international financing and the development of partnerships**.
- NDC3.0 integrates new areas of social inclusion and a just transition, while strengthening gender-sensitive measures.
- NDC3.0 aims to ensure the equal participation of women and men, as well as the inclusion of vulnerable groups, including children, youth, people with disabilities, and the elderly, in climate policy, thereby contributing to more equitable and sustainable development.

NDC 3.0

Key results



WM - with measures (at the expense of the country's internal resources)

WAM - with additional measures (with international support)

MITIGATION

- Energy (Transport)
- IPPU
- Agriculture
- LULUCF
- Waste

ADAPTATION

- Water resources
- Agriculture
- Disaster risk reduction
- Healthcare
- Energy
- Forestry and biodiversity
- Cities and settlements

INCLUSIVE PROCESS AND CROSS-SECTORAL APPROACH AT ALL STAGES (NDC 2.0 ASSESSMENT AND NDC 3.0 PREPARATION)



Participation of government bodies, civil society, scientific and academic institutions, and development partners.



- Ministry of Healthcare;
- Ministry of Labor, Social Security and Migration of the Kyrgyz Republic – social inclusion;
- just transition;
- MNRETS, Ministry of Education, Ministry of Science, Higher Education and Innovation – climate education.



Strengthening capacity for gender-sensitive planning and data collection.



Conducting inclusive consultations.

NDC3.0 AND SOCIAL INCLUSION

To systematically address vulnerable groups, a national vulnerability assessment framework was developed based on **seven criteria** (income, employment, exclusion, health, discrimination, institutional vulnerability, and transition risks), enabling objective identification of priority groups.

Particular emphasis was placed on integrating the **principles of just transition, gender equality, and social inclusion** (GEDSI mainstreaming) into all stages of the document's development.

GEDSI

Social inclusion

Gender-sensitive measures

Just transition

Climate Education Priorities

Vulnerability criteria

Criteria for understanding socially vulnerable groups:

- **Low incomes of the population** (from the subsistence minimum to the guaranteed minimum income, including monetary poverty)
- **High share of housing and utility costs** (more than 15 percent of total household income)
- **Dependence on a single source of employment in the carbon economy and vulnerability to transition risks, including unemployment**
- **Living in rural, mountainous, remote or hard-to-reach areas with limited access to basic services and infrastructure**
- **Disability, including:** age and gender-specific characteristics, temporary disability associated with chronic diseases;
- **Gender and social discrimination, including:** women, especially those of working and reproductive age; ethnic minorities; migrants (including internal and labor migrants); people with disabilities; children and youth; older persons; persons without identity or residence documents

Social inclusion

Objective

Create an institutional, legal and information environment for inclusive planning, implementation and monitoring of climate policy and measures for the transition to low-carbon development, taking into account the rights and needs of socially vulnerable groups

Measures:

- Developing a legislative framework for inclusive climate policy and methodologies for assessing its level;
- Strengthening the capacity of organizations representing vulnerable groups in the areas of climate change, sustainable development, decarbonization, biodiversity, just transition, and climate finance;
- Integrating social inclusion and climate literacy into the work of national councils and coordination mechanisms;
- Regularly reviewing social inclusion aspects within the framework of NDC3.0 implementation;
- Supplementing state social policy programs with climate-related components and climate education;
- Creating mechanisms for financial support of climate initiatives for vulnerable groups and developing partnerships to mobilize climate finance.

Just transition

Objective

Ensuring inclusive and socially just transformation of the economy, social security system, employment and migration in the context of climate change and the transition to low-carbon development

To achieve these objectives, specific measures are planned:

- Incorporating just transition principles into legislation, adopting a Just Transition Roadmap to 2035, and integrating its mechanisms into national and sectoral development programs. A methodology for assessing vulnerable occupations and competencies will be implemented, and approaches to professional training and retraining will be updated. Particular attention will be paid to revising social support mechanisms and implementing transition measures for workers and families affected by the transformation. Regular public information dissemination, consultations, social dialogues, and educational campaigns will be an important focus, engaging socially vulnerable groups, women, and youth in the green transition process.

Gender-Sensitive measures

Objective

Strengthen the adaptive capacity of national institutions to ensure gender equality and ensure sustainable gender mainstreaming in the climate policy of the Kyrgyz Republic, reducing the vulnerability of women and girls to the impacts of climate change.

Measures:

- Integrate climate change, climate literacy, sustainable development, and monitoring of NDC3.0 and NAP implementation into the work of the authorized body on gender policy and the National Council under the Cabinet of Ministers of the Kyrgyz Republic;
- Introduce mechanisms to increase women's participation in the development and implementation of climate policy;
- Include adaptation and climate risk reduction for women and girls in the National Action Plan for Gender Equality;
- Conduct a gender assessment of all draft regulations developed within the framework of NDC3.0;
- Strengthen the capacity of government and public bodies working on women's rights in climate education, green economy, just transition, climate finance, and the integration of gender indicators into the NDC3.0 monitoring system;
- Develop partnerships to mobilize climate finance and implement measures to reduce women's unpaid labor in the face of climate risks;
- Create special mechanisms for financial support for women's business projects in the field of adaptation and mitigation of climate change.

GENDER MAINSTREAMING IN NDC 3.0:

In line with the provisions of **the Paris Agreement** and the recommendations **of the UNFCCC**, NDC 3.0 implements **a comprehensive gender approach**, including three key areas:

1. Analysis and prevention of gender-negative impacts.

All mitigation and adaptation measures were assessed for their potential impact on women and men; measures were taken to reduce the risk of increased inequality.

1. Integration of gender-sensitive indicators.

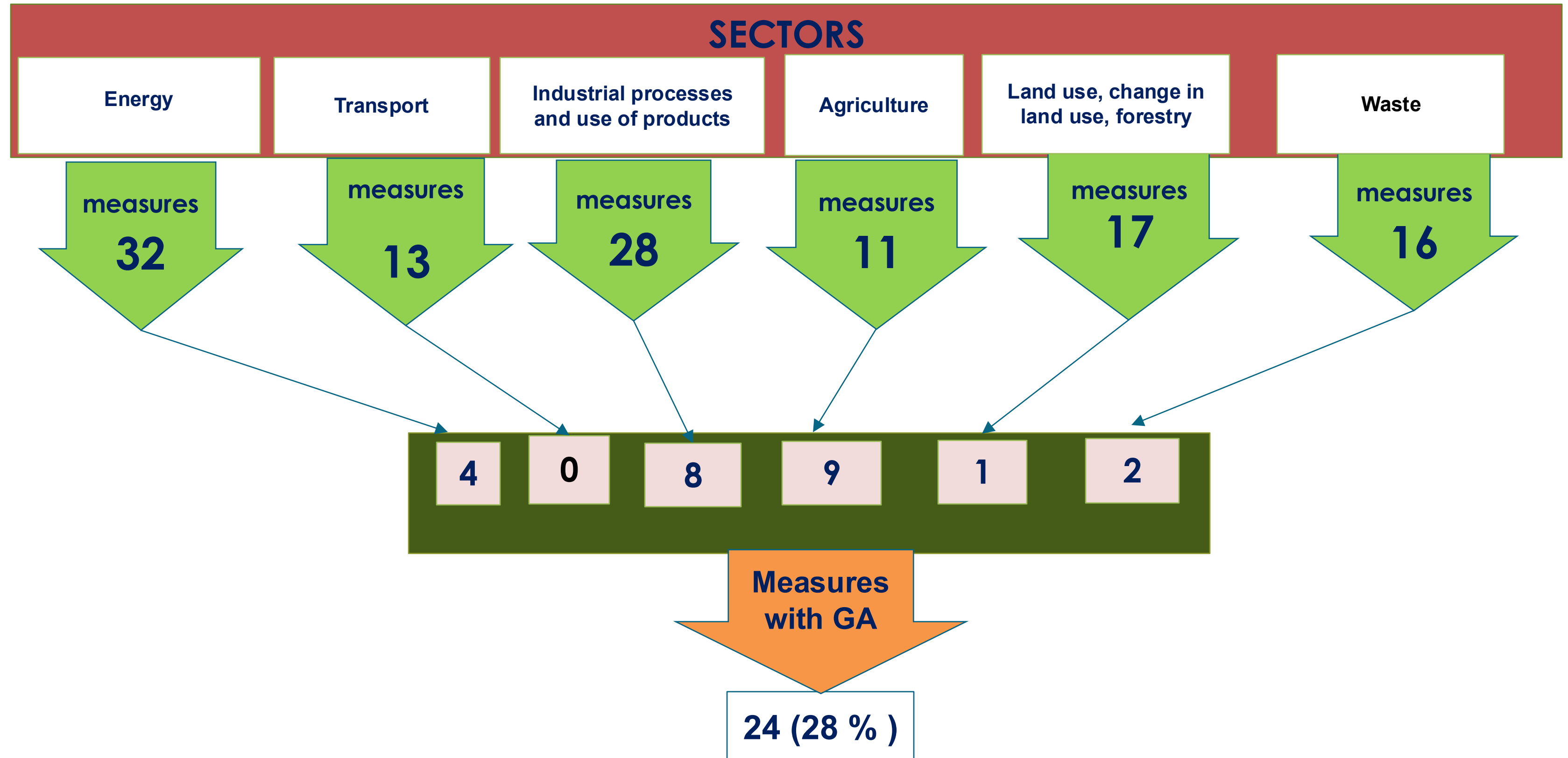
In collaboration with sectoral experts, indicators were developed that reflect the needs of women and vulnerable groups in each measure.

2. Developing transformative gender measures.

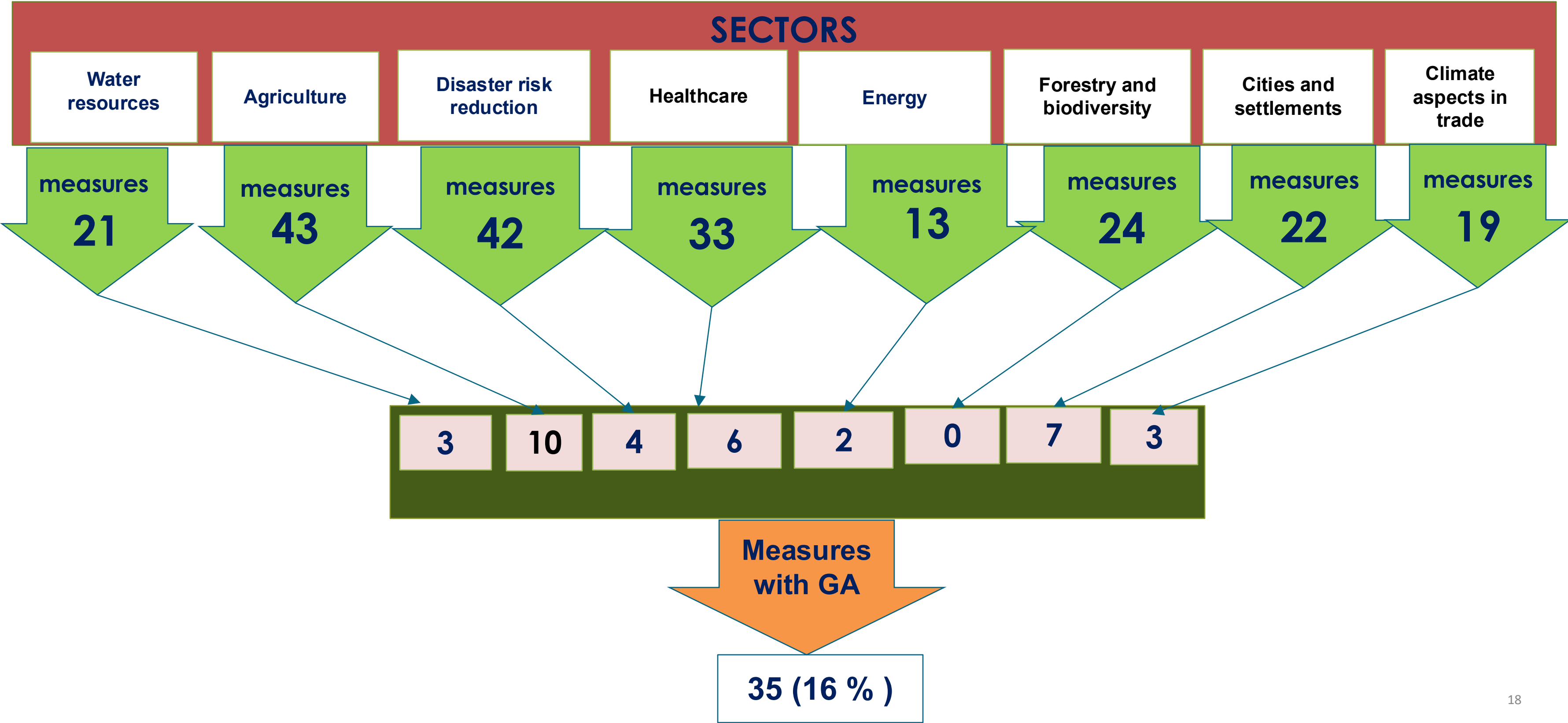
Measures aimed at addressing systemic causes of inequality, strengthening the institutional framework, and increasing women's participation in climate policy are included.

Thus, NDC 3.0 integrates both institutional and sectoral gender measures to ensure the **equity, sustainability, and effectiveness of climate policy.**

Gender-responsive measure in NDC3.0 mitigation



Gender-responsive measure in NDC3.0 adaptation



SECTORAL MEASURES: MITIGATION

Energy:

- Implement energy efficiency projects in households and public buildings, taking into account the needs of women and vulnerable groups.
- Increase women's participation in green jobs and renewable energy programs.

Industry:

- Decarbonization roadmap with gender aspects.
- Preferences for companies implementing equality and inclusive policies.
- Introduction of a socio-environmental rating (taking into account the percentage of women, training programs, ESG initiatives).
- Corporate health and well-being programs for women and vulnerable groups.
- Updating curricula on sustainable development and green technologies.
- Inclusion of women and girls in engineering and climate-sensitive specialties.

Agriculture:

- Support for women farmers: access to sustainable technologies, agricultural training, microfinance.
- Research on organic farming, taking into account the interests of vulnerable groups.

Forestry and land management:

- Involving women, youth and persons with disabilities in climate initiatives.

Waste:

- Research on diaper waste management.
- Information campaigns on environmentally responsible consumption.

SECTORAL MEASURES: ADAPTATION

Water and Infrastructure:

- Integrating climate risks into gender-responsive policies and governance.
- Microcredit for women farmers (2,000 loans).
- Strengthening the capacity and resilience of women and girls to climate risks.

Agriculture:

- Financial and training support for women farmers.
- Pilot programs to restore incomes after climate crises.

Disaster Risk Reduction:

- Early warning systems and consideration of the special needs of women, including women and girls with disabilities, during evacuations.
- Strengthening community preparedness and infrastructure resilience.

Healthcare:

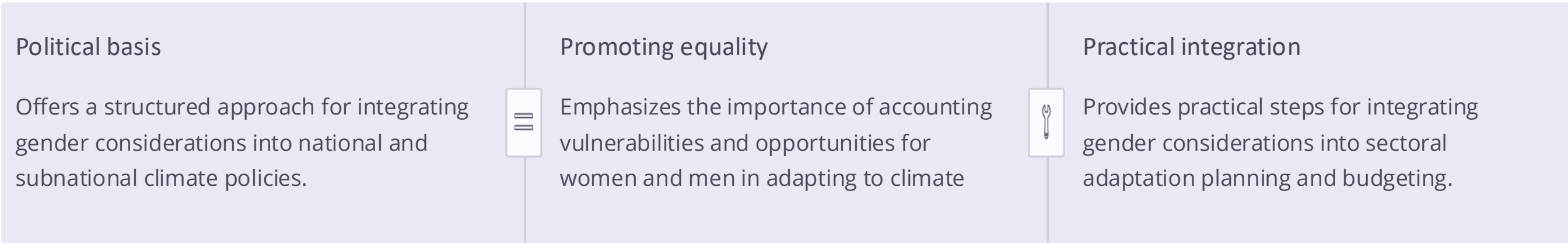
- Methodology of climate-sensitive diseases taking into account gender aspects.
- Climate-medical research centers and modernization of services for vulnerable groups, including women.

Cities and Towns:

- Green urban planning and public consultations on General Plans with women's participation and vulnerable groups
- Women's hubs at local governments, gender audits of the urban environment, greening initiatives and other climate solutions.

OBJECTIVE OF GUIDELINES FOR GENDER-RESPONSIVE ADAPTATION PLANNING TO CLIMATE CHANGE IN THE KYRGYZ REPUBLIC

The Guide on Integrating Gender-Sensitive and Gender-Responsive Adaptation is a critical tool for decision-makers to ensure equality and effective adaptation within the National Adaptation Planning process at all levels.



This framework aims to strengthen the resilience of vulnerable groups by recognizing gender roles and responsibilities in climate risk management, leading to more inclusive and effective adaptation outcomes.

<https://www.undp.org/ru/kyrgyzstan/publications/integraciya-gendernykh-aspects-v-nap-kyrgyz-republic>

WOMEN OF THE FERGANA VALLEY ARE ON THE FRONTLINES OF CLIMATE CHANGE RESILIENCE, ADAPTATION AND PEACE

A UN Peacebuilding Fund project aimed at strengthening resilience, adaptation, and peacebuilding among women in the Fergana Valley (Batken, Jalal-Abad, and Osh regions).

Triple Nexus: Water, Gender and Peacebuilding. The project focuses on the critical triple nexus of peace, gender, and climate change, with a particular focus on irrigation water as a key driver of social tension and adaptation.



Target Audience

Women farmers and local community leaders in three regions of the southern Kyrgyz Republic.



Geography

Batken, Jalal-Abad and Osh regions of the Kyrgyz Republic.



Duration

24 months (2025–2026).



Budget

The project's total budget is nearly \$2 million. It is financed by the UN Peacebuilding Fund and implemented jointly with EM BIOM.

Partners:

Government : President's Administration; Ministry of Culture, Information, Sports and Youth Policy; Ministry of Water Resources, Agriculture and Processing Industry; Ministry of Labor, Social Security and Migration; NBRETS KR; MEC KR; Plenipotentiary Representative Offices of the President of the Kyrgyz Republic, district and village administrations, local councils in three regions;





Scientific institutions: Osh State University

Local: households, NGOs



FURTHER ACTIONS/ CONCLUSION

Integrating the GEDSI (Gender, Disability and Social Inclusion) approach into the process of updating and implementing the Nationally Determined Contribution (NDC3.0) helps ensure that climate action is equitable, effective and sustainable.

Social inclusion	
Gender-sensitive measures	
Just transition	
Climate Education Priorities	

This is especially important for priority sectors such as energy, transport, agriculture, and industry, where the inclusion of all social groups fosters innovation and broader economic impact.

The private sector plays a key role in promoting GEDSI principles through the implementation of inclusive business models, the development of green technologies, investment in gender-sensitive climate solutions, and the creation of accessible jobs for women, youth, and people with disabilities.

In the next stage, it is important to continue integrating international standards—specifically, the UNFCCC Gender Action Plan and the Transparency Framework (ETF)—into corporate strategies and climate initiatives. This will strengthen the partnership between government, business, and civil society in ensuring a just climate transition that leaves no one behind.



CAREC Women's Business Forum 2025: "Together for Green Innovation and Gender Equality"

THANK YOU

FOR YOUR ATTENTION

 baktygul.ysabekova@undp.org

 www.undp.org/kyrgyzstan

